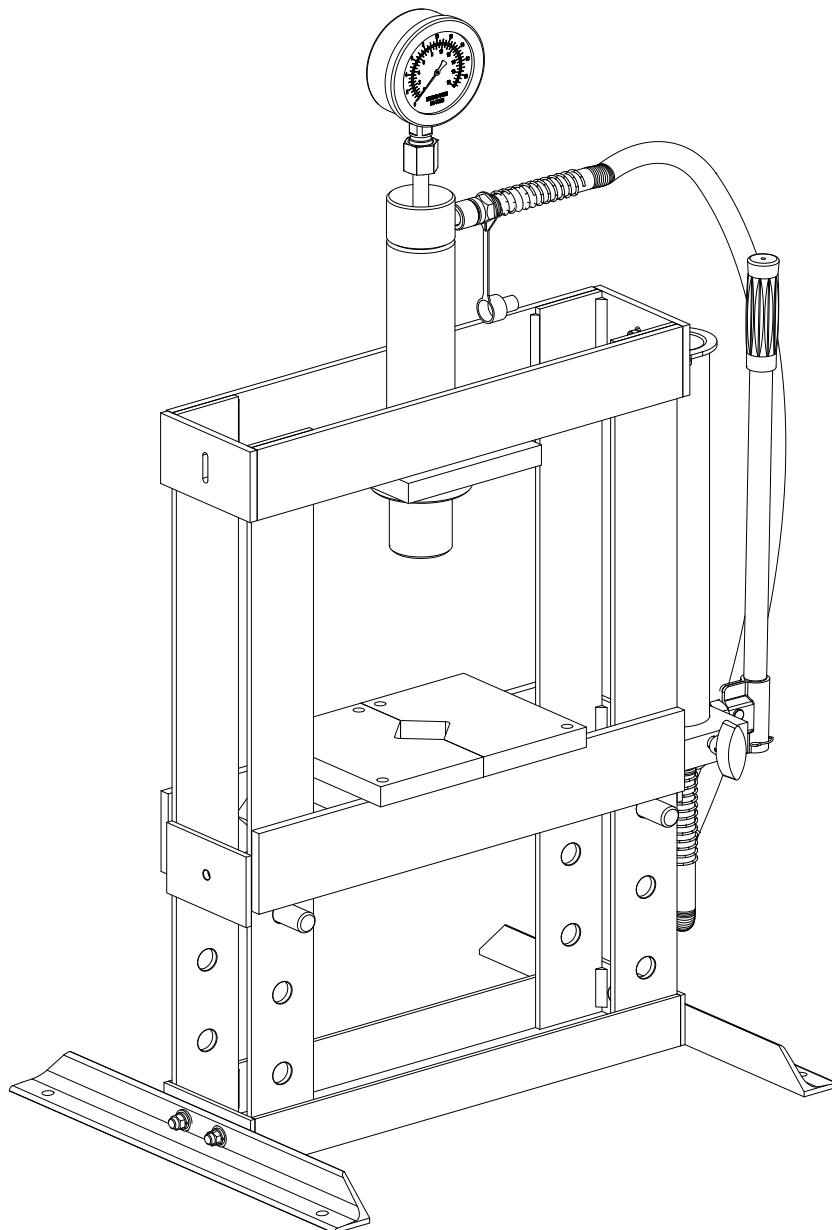




SHBP10W

10 Ton Hydraulic Shop Press



CE

⚠ WARNING!

Read carefully and understand all ASSEMBLY AND OPERATION INSTRUCTIONS before operating. Failure to follow the safety rules and other basic safety precautions may result in serious personal injury.

TECHNICAL SPECIFICATIONS

	Description
Item	SHBP10W
Capacity	10 TON
Bed Opening	110mm
Work Range	0 ~ 340mm
Stroke Length	165mm
Inside Bed Dimensions L x W	110x340mm
Dimensions L x W x H	680x450x1070mm

SAFETY MARKINGS

⚠ WARNING!

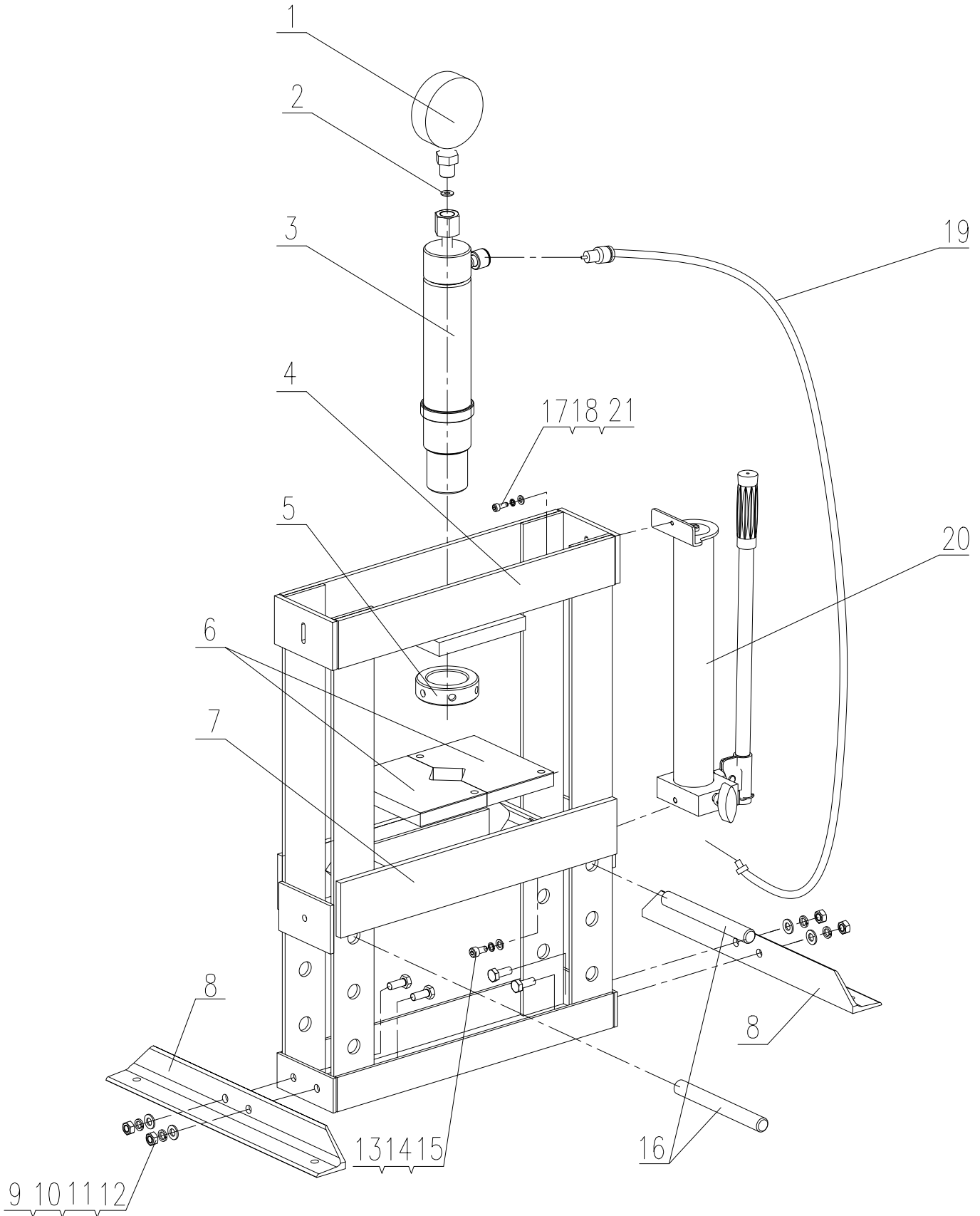
1. Study, understand, and follow all instructions before operating the device.
2. Do not exceed rated capacity.
3. Prior to use, make sure the press is securely anchored.
4. The press shall be installed and operated in accordance with instructions.
5. Ensure the work area is clean and free of any hazards before operation.
6. Keep hands, arms, feet, and legs out of the work area. Accidental slippage can result in personal injury.
7. Use appropriate guarding to contain any pieces that may break or fly apart when applying force.
8. Use only press accessories having a capacity rating equal to or greater than the capacity of the press.
9. Verify lift cables are slack before pressing on the bolster.
10. Avoid off-center loads.
11. No alterations shall be made to the product.
12. Do not use this press for any use other than the manufacturer specified usage.
13. Failure to heed and understand these instructions and markings may result in personal injury, property damage, or both.

PARTS LIST

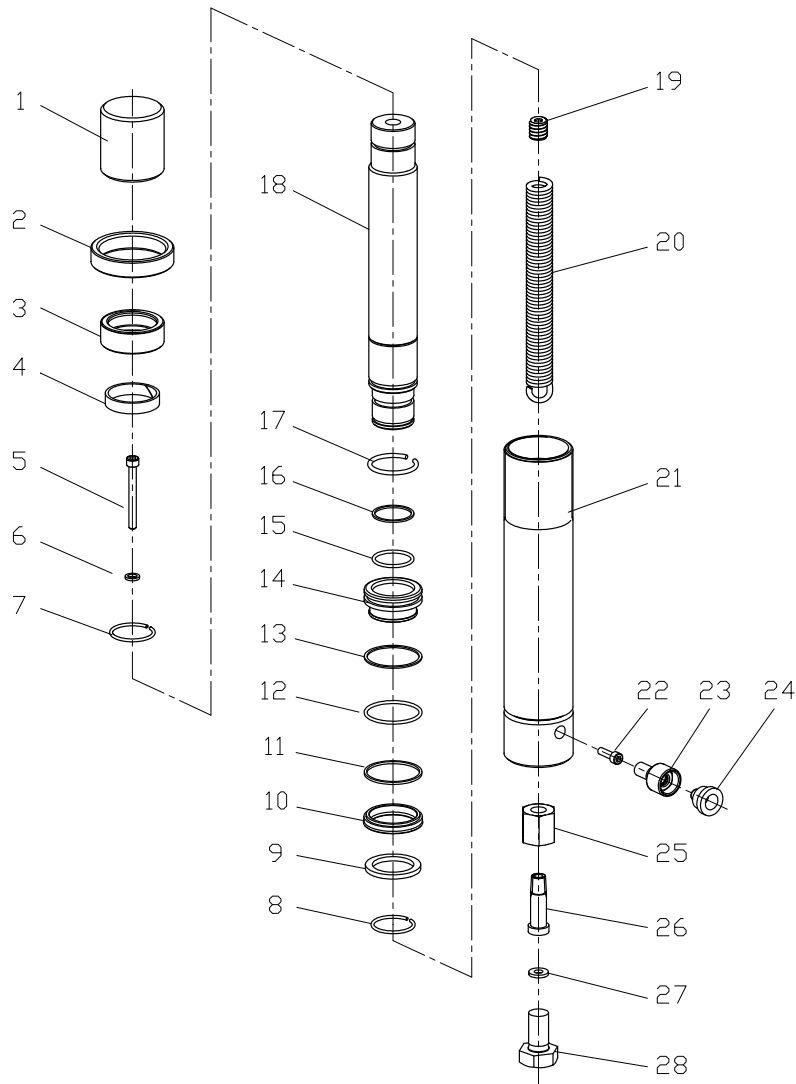
SHOP PRESS PARTS LIST (figure a)

NO	Description	QTY			
1	pressure gauge	1	11	spring washer 10	4
2	nylon ring	1	12	nuts M10	4
3	press cylinder	1	13	bolt M8x16	1
4	frame	1	14	spring washer 8	1
5	under round nut	1	15	washer 8	1
6	heel block	2	16	rod	2
7	bed flat	1	17	bolt M6x16	1
8	base section	2	18	spring washer 6	1
9	bolt M10x25	4	19	hose fitting	1
10	washer 10	4	20	press pump	1
			21	washer 6	1

SHOP PRESS PARTS LIST (a)



RAM PARTS LIST (b)

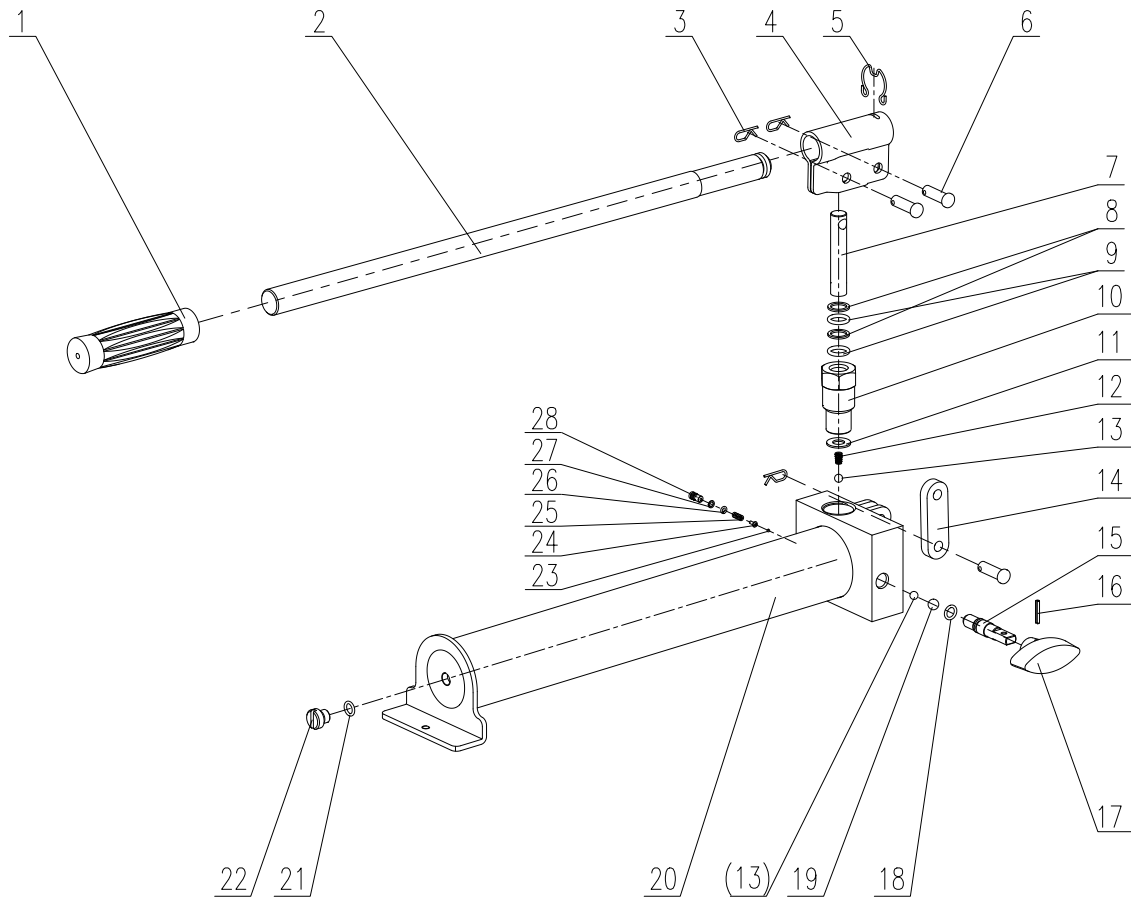


RAM PARTS LIST (figure b)

No.	Description	QTY
1	End Cap	1
2	Upper collar	1
3	Threaded ring	1
4	guide ring	1
5	Bolt M8X70	1
6	Washer	1
7	Circlip	1
8	Circlip	1
9	ring	1
10	Y-ring	1
11	Sealing ring	1
12	ring	1
13	Retaining ring	1
14	Threaded end	1
15	Ring	1

No.	Description	QTY
16	Retaining ring	1
17	Circlip	1
18	Ram piston	1
19	Spring nut	1
20	Spring	1
21	Cylinder body	1
22	Hex socket blot M8x30	1
23	Connector	1
24	Dust cap	1
25	Gauge coupling	1
26	Connecting insert	1
27	Sealing washer	1
28	Blot M20x25	1

PUMP PARTS LIST (C)



No.	Description	QTY
1	handle grip	1
2	handle	1
3	torsional spring latch	1
4	socket	1
5	socket spring	1
6	pin	1
7	piston	1
8	seal	1
9	O-ring	1
10	clamping nut	1
11	copper pad	1
12	spring	1
13	6mm stell ball	1
14	connecting rod	1
15	release valve stem	1

No.	Description	QTY
16	pin ϕ 3×20	1
17	release valve stem handle	1
18	O-ring	1
19	8mm stell ball	1
20	base	1
21	O-ring 8.5×2.65G	1
22	seal screw	1
23	2mm stell ball	1
24	spring plate	1
25	spring	1
26	O-ring	1
27	seal	1
28	pressure adjusting screw	1

ASSEMBLY INSTRUCTIONS

Use the exploded drawing as your guide to assemble. Lay all parts and assemblies out in front of you before beginning. The following procedure is recommended:

- Attach the two base sections (8) to the upright frame (4) using bolts (9), washers (10), spring washers (11) and nuts (12).
- Insert the hydraulic cylinder (3) from the top side of frame. Once the cylinder is inserted into the frame support plate make sure that round lifting ring is seated flat on the cylinder support plate. Then attach the round threaded nut (5) to the hydraulic cylinder. Turn clockwise to screw the round nut onto threaded shaft on the ram. Tighten round nut (5).
- Insert the rods (16) into the bottom holes on the frame, then insert the bed flat (7) into press frame, onto the rods.
- Attach the pump assembly (20) to the right frame using screws (17,13), washers (21,15) and spring washers (18,14).
- Locate the hydraulic hose fitting on the cylinder and assemble the pressure gauge (1) to the pressure gauge connection fitting, on the top of the hydraulic cylinder (3).

BEFORE FIRST USE

- Before first use of this product, purge away air from the hydraulic system: open the release valve by turning it counterclockwise. Pump several full strokes to eliminate any air in the system.
- Check all parts and conditions, if there is any part broken, stop using it and contact your supplier immediately.

OPERATING INSTRUCTIONS

WARNING! ENSURE THAT YOU READ, UNDERSTAND AND APPLY THE SAFETY INSTRUCTIONS AND WARNINGS BEFORE USE.

- Place the heel block on press bed frame, then insert workpiece onto the heel block.
- Close the release valve by turning it clockwise until it is firmly closed.
- Pump the handle until serrated saddle nears workpiece.
- Align workpiece and ram to ensure center-loading.
- Pump the handle to apply load onto workpiece.
- When work is done, stop pumping the handle, slowly and carefully remove load from workpiece by turning the release valve counterclockwise in small increments.
- Once ram has fully retracted, remove workpiece from bed frame.

MAINTENANCE

- Clean the outside of the press with dry, clean and soft cloth and periodically lubricate the joints and all moving parts with a light oil as needed.
- When not in use, store the press in a dry location with ram and piston fully retracted.
- When press efficiency drops, purge always air from hydraulic system as described before.
- Check the hydraulic oil; remove the oil filler nut on the top of the reservoir, if the oil is not adequate, fill with high quality hydraulic jack oil as necessary, then replace the oil filler nut, purge away air from the hydraulic system.



1 West Side Park, Belmore Way, Raynesway, Derby, DE21 7AZ